



5/91 Glass Street ESSENDON VIC

4 2 2

Located within a modern complex in one of Essendon's premier pockets, this immaculately presented, two storey townhouse is sure to impress with its contemporary and low maintenance design, making it perfect for easy living. Making smart impressions from every angle, this residence showcases seamless indoor/outdoor living for your convenience, as well as a refined palette of natural stone, light timbers and quality fittings, creating a luxurious feel that flows throughout. Located at the rear of this complex for added privacy, this beautifully appointed home boasts an abundance of natural light, and features a modern kitchen complete with pendant lighting, stone bench tops, stainless steel appliances, gas cooktop, and ample cabinetry for all your storage needs. The kitchen adjoins the spacious living/dining zone which leads out to the

Type : Townhouse

View : <https://www.reevic.com.au/lease/vic/north/essendon/residential/townhouse/8461622>



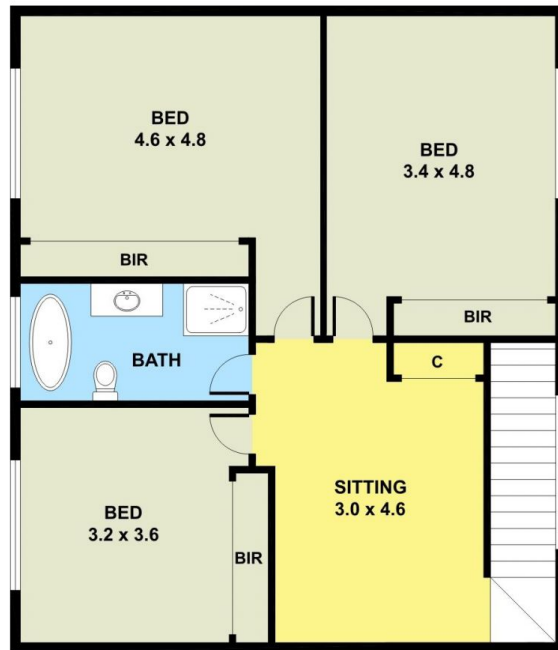
Maria Gangemi
(03) 9379 5822



Office (03) 9379 5822
(03) 9379 5822

[For full version visit the website](https://www.reevic.com.au)

5/91 Glass Street, Essendon



FIRST FLOOR



GROUND FLOOR

Please note: All stated dimensions are approximate only. Particulars given are for general information only and do not constitute any representation on the part of the vendor or agent.

